



GMT MONTHLY MEMBERSHIP PROGRESS REPORT

Results as of: 6/30/2020

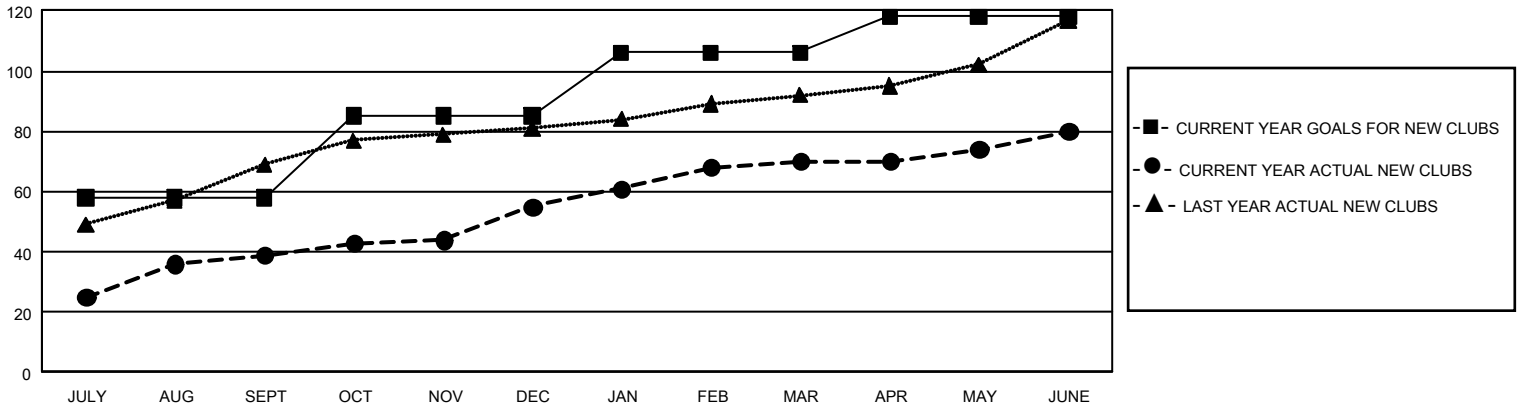
GMT Constitutional Area 6, Group K

GMT: OPEN

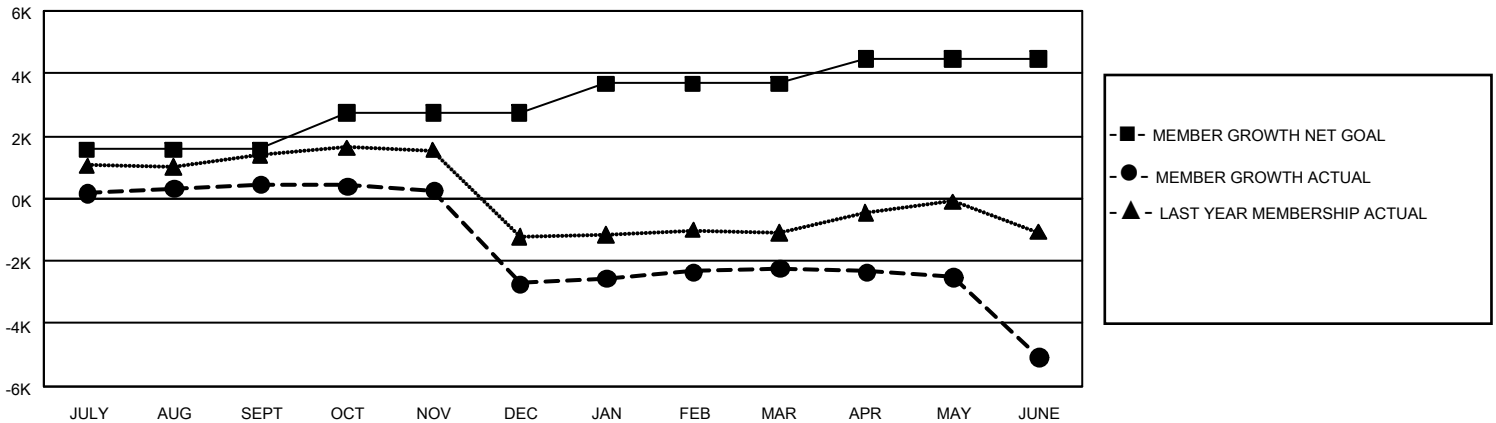
REPORT DOES NOT INCLUDE CLUBS IN UNDISTRICTED AREAS.

Clubs				Members			
RESULTS FOR 2019-2020				RESULTS FOR 2019-2020			
QUARTER	NEW CLUB GOAL	NEW CLUBS	DROPPED CLUBS	QUARTER	MEMBER GROWTH NET GOAL	MEMBER GROWTH ACTUAL	DROPPED MEMBERS ACTUAL (including transfers)
JULY/AUG/SEPT	174	39	13	JULY/AUG/SEPT	4,725	1,707	1,159
OCT/NOV/DEC	81	16	106	OCT/NOV/DEC	3,540	993	4,131
JAN/FEB/MAR	63	15	7	JAN/FEB/MAR	2,775	1,158	454
APR/MAY/JUNE	36	10	3	APR/MAY/JUNE	2,385	1,139	3,850

GOALS AND ACTUAL NEW CLUBS CUMULATIVE



GOALS AND ACTUAL MEMBERS CUMULATIVE



DROPPED CLUBS: 128	543 CLUBS OF 1,085 ADDED 1 OR MORE NEW MEMBERS	GENDER DISTRIBUTION MALE 23,692 (69.89%) FEMALE 10,209 (30.11%)
DROPPED MEMBERS DECEASED 117 CLUB CANCELLED 2,894 OTHER 6,584 <hr/> TOTAL 9,595	CLICK HERE FOR CUMULATIVE MEMBERSHIP DATA	TOTAL FAMILY UNIT MEMBERS 16,061 FAMILY MEMBERS PAYING HALF DUES 9,209